



TURNTABLE

Volume 3, Number 6

June 2019

The NMRA's *Turntable* is a monthly publication which, like a railroad turntable, will lead you in a number of directions on the internet.

This e-publication is a collection of railroad and model railroad videos, podcasts, websites, and/or other information freely available on the internet that we think may be of interest to you. The NMRA claims no ownership of this information, nor do we endorse its creators or their websites. The *NMRA Turntable* will not promote individuals or their for-profit ventures.

A Members-Only Exclusive Clinic
from Model Railroader Video Plus



[State Line Kitbash Challenge Part 1](#)

[State Line Kitbash Challenge Update 1](#)

Are you looking for a modeling challenge? Check out the State Line Kitbash Challenge. The Model Railroader magazine and MR Video Plus staff invite you to join them in

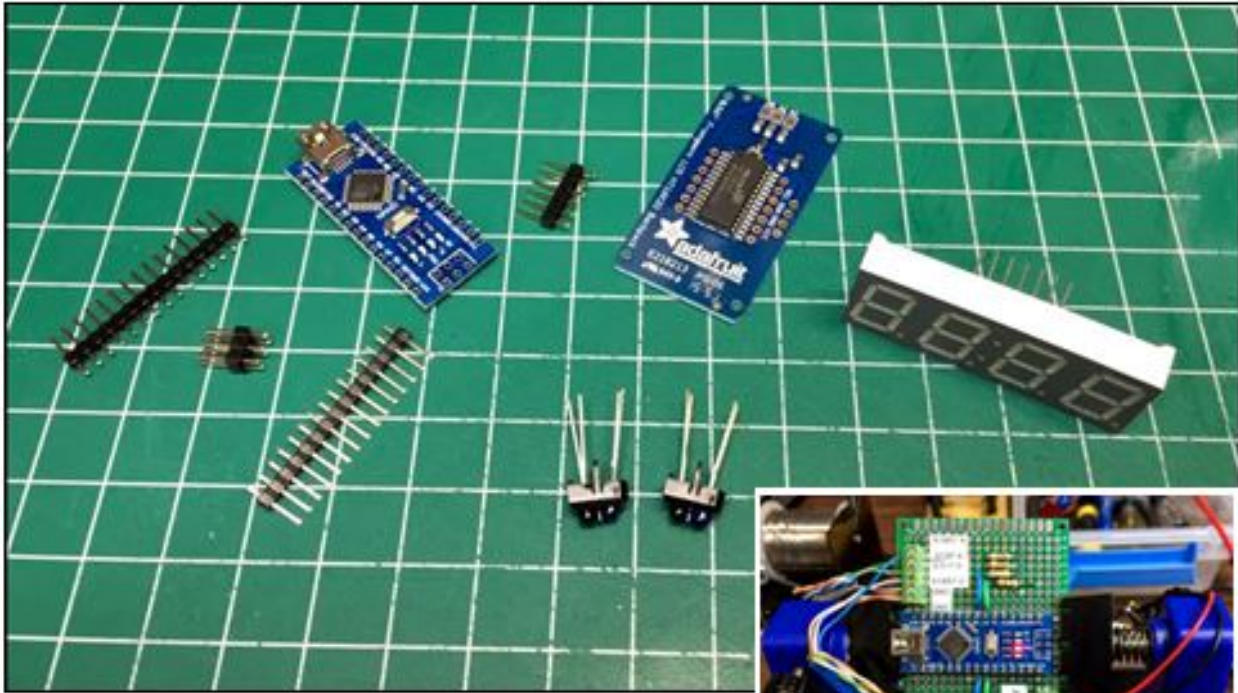
taking a Walthers' State Line Farm Supply kit and turn it into something you can use on your model railroad. The kickoff video includes the ground rules for the challenge, and then takes a look at what some of the staff and contributors may decide to build. We've also included the first update video, showing you the progress so far from several of the participants. Speaking of participating, the kits are readily available in N and HO scales, so you can play along at home and share your work on the MR Facebook or MRVP Instagram pages. And check back to see all the excitement and action as it unfolds this summer on mrvideoplus.com!



Building a Model Railway - Part 7 - Track Detail

[Trackside Details](#)

Once you've laid the track it is very tempting to just jump in and add the ballast. However there are loads of little details you need to work on before that can happen. In this video we are shown details that can be added to improve the overall appearance.



**Model Railroad Speedometer
Arduino Circuit—Part 1**

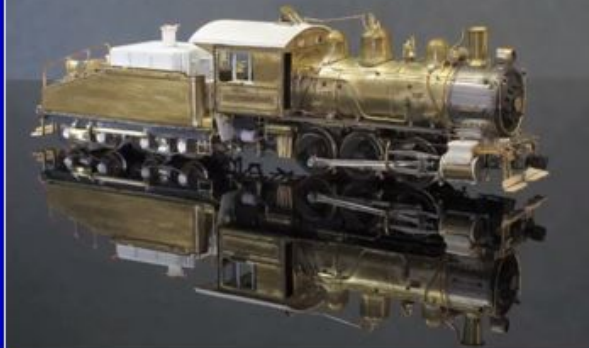


[Arduino Speedometer - Part 1](#)

A video showing how to make a speedometer for your model railroad using an Arduino and adaptable to any scale.



Spokane, Portland & Seattle
Class A-1 0-6-0



This image illustrates the size of the hand-made spoked driving wheels you are watching on the engine in this video.



SP&S Class A-1 0-6-0

N Scale Brass Locomotive

In this video, Max Magliaro shows the running qualities of his not-yet-painted brass N scale SP&S Class A-1 0-6-0. Max later entered this steam locomotive model at last year's NMRA Convention in Kansas City where it garnered 118 points, enough for a 1st Place finish in the Scratchbuilt

Steam Locomotive category. He also was awarded the RMC Award and the William J. Lenior Locomotive Construction Award for Best Scratchbuilt Steam Locomotive.



Building F.R.E.D. (the flashing rear-end device)

[Building a FRED](#)

In the late 1960's and early 1970's the flashing rear end device (FRED) replaced the iconic caboose on most freight trains. This video shows how the presenter built a model of one on the cheap using another iconic device - the 555 timer IC. Grab yourself a drink and come along for the ride.

NMRA Clinics From Our Members-Only Collection

***** You will need to sign-in as a member to view these video clinics! *****

Wish list details

Planning the Ohio & West Virginia Railroad

- Long trains curving through beautiful mountain scenery
- Lots of mountain scenery to build
- Plenty of room for urban structures
- Prototype operation capability
- Lower level for kids or grandkids to run trains
- Great train watching potential (3 separate loops)



Design for OPS and Train Watching

Everyone has a wish list when designing a layout. In this clinic Greg Johnson will show how his desire for operations AND train watching AND mountain scenery AND a location for urban structures is being accomplished on his layout.

Best of the Rest



Starting your first wood structure kit for model railroaders Episode 012

[Starting Your 1st Wood Structure](#)

Jason will show you the basic steps that are very important for the success for any wood craftsman kit.



Overland HO brass caboose build with SoundCar by Soundtraxx

[Sound Card Installed in a Caboose](#)

The presenter shows how he upgraded a brass caboose with a Soundtraxx Soundcar and other details.



Rerailing a Steam Locomotive

[Rerailing a Steam Locomotive](#)

Watch how real railroaders on the prototype rerailed a 200 ton steam locomotive, the NKP #765.



Industrial Operations on My N-Scale Model Railroad (Part 1)

Industrial Switching OPS

In this video we take a look at the Crown Oil & Gas transloading facility on the presenter's N scale layout. Then we deliver propane gas to this facility by rail.



UK - Three Steam Locos on a Wild Day in North Yorkshire, 2/6/2019

A Wild Day on the N. Yorkshire Moors

A visit to the North Yorkshire Moors Railway offered us three steam locomotives working the day's passenger trains. The NYMR owns and operates the line between Grosmont and Pickering but also has running rights over Network Rail tracks between Grosmont and Whitby. (If you travel to England, this line is well worth seeing and riding!)



Layout update: addition of a county road with smooth it

[Build a County Road with Smooth It](#)

The presenter shows how he made a County road on his layout using Woodland Scenic's Smooth It.



The Arizona Division of the Pacific Southwest Region's 2019 Convention - **ARIZONA JUNCTION**



ARIZONA RAILWAY MUSEUM
SELF GUIDED TOUR

[PSR 2019 - Arizona Junction](#)

Join us for this year's Pacific Southwest Region Convention in Mesa, Arizona!

[Division Business Car](#)



Great Lakes Industrial RR

Featured in the *Division Business Car Column* appearing in the June, 2019 issue of the *NMRA Magazine*

This trip we virtually tour an O scale, mid-western standard gauge, rust belt industrial RR

FAST TRACKS Turnouts

Featured in the *Division Business Car Column* appearing in the June, 2019 issue of the *NMRA Magazine*

From raw rail to finished turnout, build turnouts using the *Fast Tracks* system



Photo Etching

Featured in the *Division Business Car Column* appearing in the June, 2019 issue of the *NMRA Magazine*

An in-depth introduction to photo etching using components commercially available to modelers

[Division Business Car](#)

The *Division Business Car* column appears in even-numbered months in *NMRA Magazine*. It's loaded with great modeling ideas, plus useful information that can help make your Division, Region or 100% *NMRA Club* even better. The information comes from articles published in Region, Division, and club newsletters. The best of these articles are posted on the *NMRA* website. You can read the entire archive, from as far back as 2011 right up to the latest posting, by clicking [here](#).

Don't forget to visit the [Partnership Program](#) page on our website to get great deals and discounts!

Previous issues of the *NMRA Turntable* are available on the *Turntable Archives* page. You must first log in as a member at: nmra.org After you are in the members-only section, then hover over Publications on the menu bar, then *NMRA Turntable*, and then click on one of the list of back issues.

Editor: [Paul V. Voelker](#)

Contributing Editor: Philip Sharp

Executive Editor: [John Stevens](#)

The *NMRA Turntable* is an official monthly production of the National Model Railroad Association, Inc. Publishing Department ([Don Phillips](#), Manager). Its purpose is to introduce *NMRA* members to a selection of instructional videos and online publications that they may find of interest. If you know of an *NMRA* member who is not receiving this mailing, please direct them to [here](#) to update their email address. If you no longer wish to receive these mailings, please don't mark them as SPAM. Instead, click the Safe Unsubscribe link at the bottom of this page. ©2017 National Model Railroad Association, Inc., P.O. Box 1328, Soddy Daisy TN 37384.

STAY CONNECTED:

